



# **CompassCom** Partner Offerings & Cityworks Integration

# What business are we in?



# CompassCom Mission

---

## Accurate location data you can trust to deliver results!

### Data

- Location
- Time
- Speed, heading
- Sensors
- Esri GIS centric
- Bring your own device
- Open interface to 3<sup>rd</sup> party software



### Trust

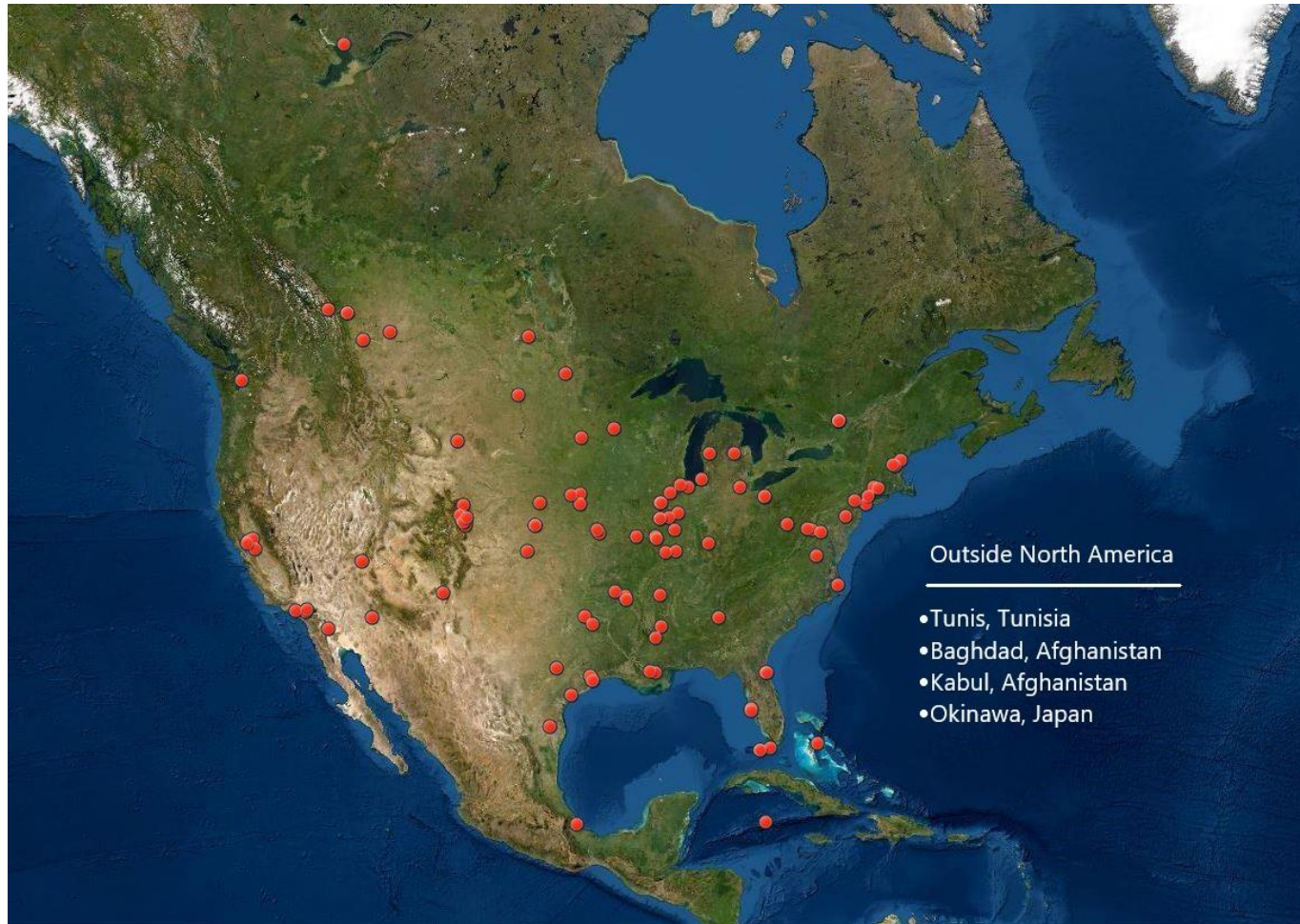
- Secure on-premise, IA
- Managed Cloud
- Choose the wireless/hardware with the cadence to meet your mission
- Secure login and user management



### Results

- Safety
- Efficiency
- Accountability
- Sustainability

# Our Customers



## 56,979+ units in service

- National Government
- State and Local
  - Public Works
  - Public Safety, Sheriff
  - DOT
  - Solid Waste
- Utilities
  - Water
  - Electric
  - Gas
- Refinery
- Defense
  - Support for Global Deployment
- English
- Spanish
- French
- Portuguese, later this year

# CompassCom Platform



Deploy in the Cloud, as a managed service or on premise delivered via web browser

Esri ArcGIS based common operating picture configured to meet workflow requirements

Leverage investment in ArcGIS and GeoEvent Server Connector - Plug & Play GeoEvent Connector

Published API for location, status and messaging data to be shared across the Enterprise

Leverage investment in CityWorks - Plug & play with CityWorks Connector

©2021 CompassCom Software Corporation

# Products



## CompassWorks

SaaS Solution leveraging ArcGIS. Users login anywhere with secure web access to apps and maps configured to meet your workflow. Hosted service increases business agility, lowering costs, reducing IT complexity and freeing up IT resources. Managed, private or hybrid cloud options.



## CompassTrac Enterprise

On premise system to support deployments where ownership, control and security is the requirement. Enterprise GPS tracking behind your firewall, in your infrastructure, on-premises, that works with your ArcGIS platform, enterprise systems and policies.



## CompassRespond™

A Portable situational awareness Radio Tracking System when there is no LMR or LTE coverage. A jump and go “Talk Around System” for Motorola Astro radios or add the capability of a Portable P25 Repeater to provide enhanced conventional coverage over your “Area of Operations”.



## CompassCom for Developers

Offers the industries most flexible platform and apps for GPS tracking development, deployment of real-time data in ArcGIS, and integration of real-time data into 3<sup>rd</sup> party software solutions.

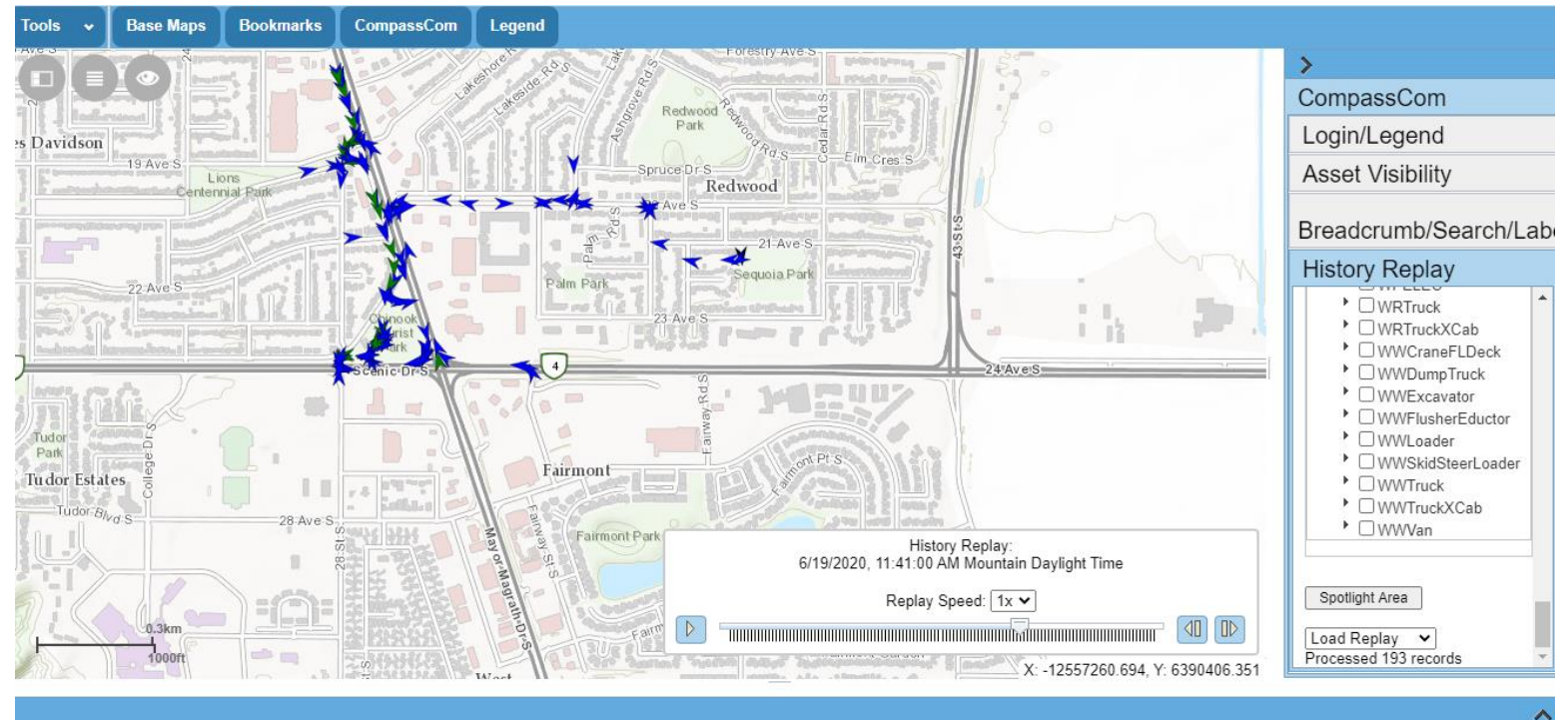


## CompassIoT

GPS telematic devices and sensors for mobile IoT. Simple device on/off, plow or broom up/down, shot gun release, lights and siren on/off, emergency button, snowplow spreader controller data are the examples of status delivered to connected apps.

# Cityworks Integration

- Version 2.0 Esri Javascript
  - Log in to CompassTrac from Cityworks® Viewer
  - Group Legend
  - Real Time asset display
  - Breadcrumbs display
  - Detailed asset selection and pop-up
  - Asset labels
  - Smart Search
  - Historical Replay
  - Addition of ODB via Esri Map Service
  - AVL monitor and Alert indicator



- Version 3.0 Esri Javascript
  - Support of 3<sup>rd</sup> party integrators for custom workflows

Should you have any questions,  
or would like to schedule a product  
demonstration, please contact;

Mike Gyde, Chief Revenue Officer

Email: [mgyde@one-compass.com](mailto:mgyde@one-compass.com)

Cell: (480) 335-7999